

FORMAZIONI CANDLE

Le formazioni *candle* elencate costituiscono la raccolta utilizzata per identificare i segnali dei *candlesticks*. Il numero indicato tra parentesi alla fine di ogni nome rappresenta il numero di *candles* utilizzati per definire quella particolare figura. Le formazioni rialziste e ribassiste sono divise in due gruppi in base all'appartenenza alle formazioni d'inversione o di continuazione.

Formazioni d'inversione al rialzo

Long white body (1)
 Hammer (1)
 Inverted hammer (1)
 Belt hold (1)
 Engulfing pattern (2)
 Harami (2)
 Harami cross (2)
 Piercing line (2)
 Doji Star (2)
 Meeting lines (2)
 Three white soldiers (3)
 Morning star (3)
 Morning doji star (3)
 Abandoned baby (3)
 Tri-star (3)
 Breakaway (5)
 Three inside up (3)
 Three outside up (3)
 Kicking (2)
 Unique three rivers bottom (3)
 Three stars in the south (3)
 Concealing swallow (4)
 Stick sandwich (3)
 Homing pigeon (2)
 Ladder bottom (5)
 Matching Low (2)

Formazioni di continuazione al rialzo

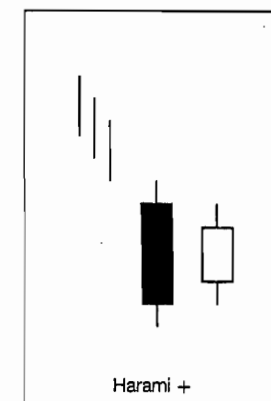
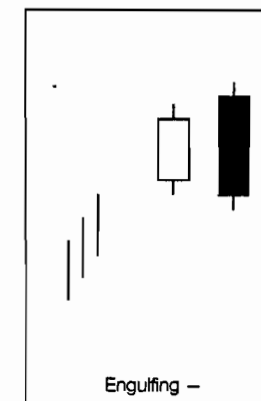
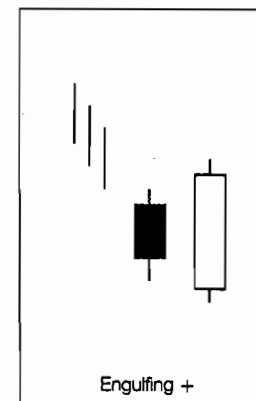
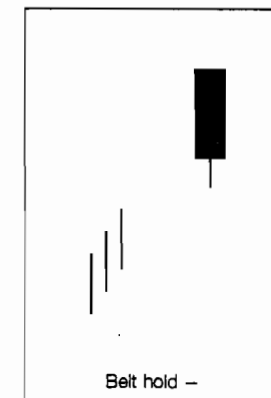
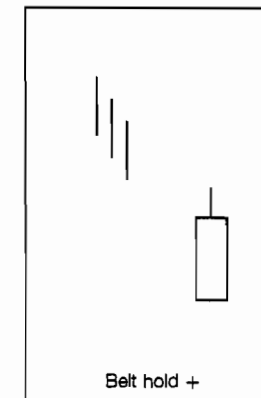
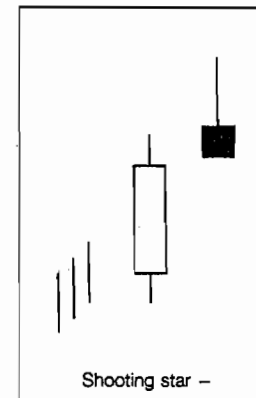
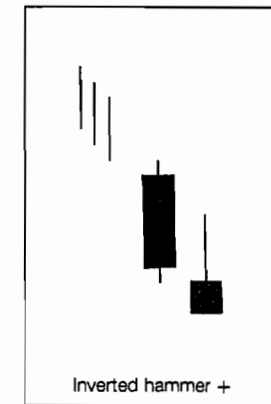
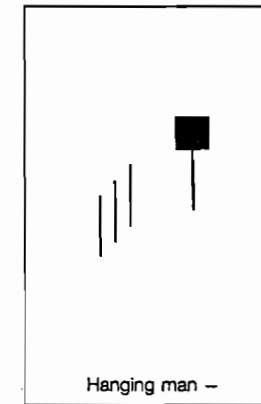
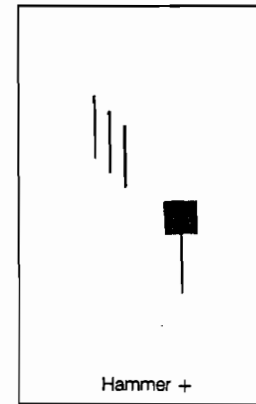
Separating lines (2)
 Rising three methods (5)
 Upside tasuki gap (3)
 Side by side white lines (3)
 Three line strike (4)
 Upside gap three methods (3)
 On neck line (2)
 In neck line (2)

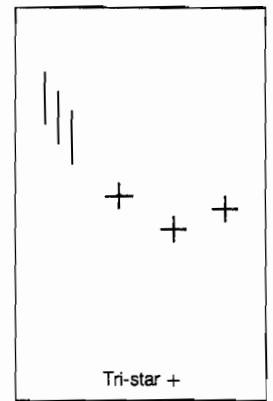
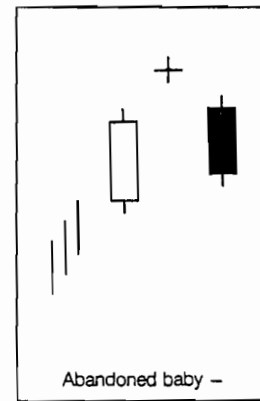
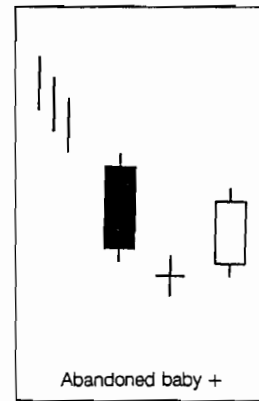
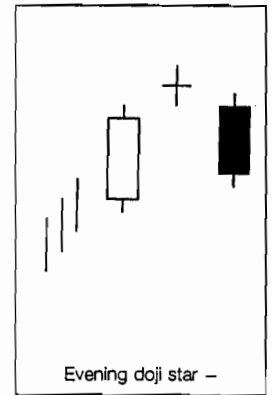
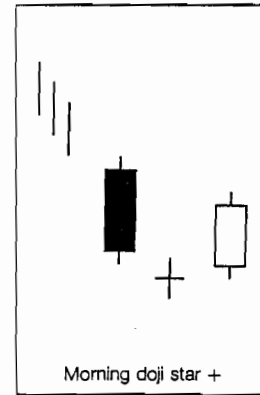
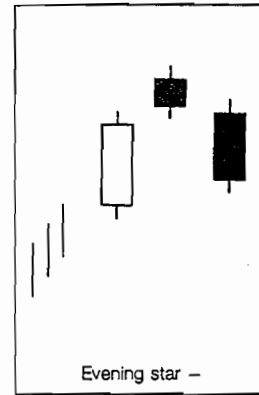
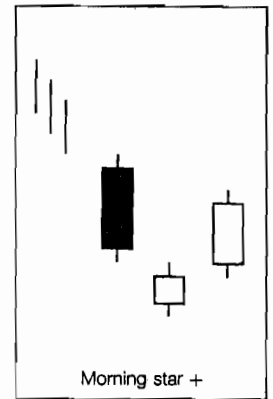
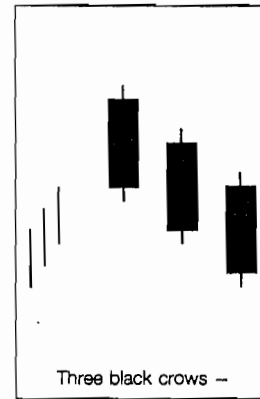
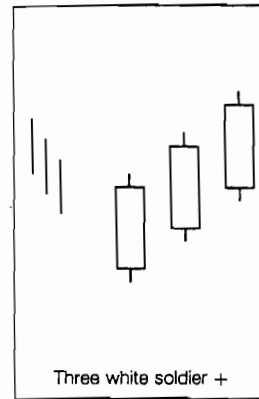
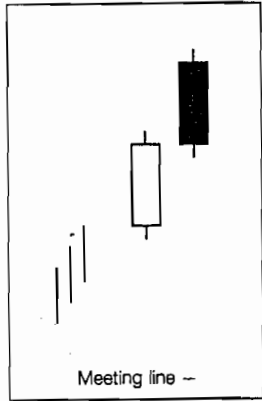
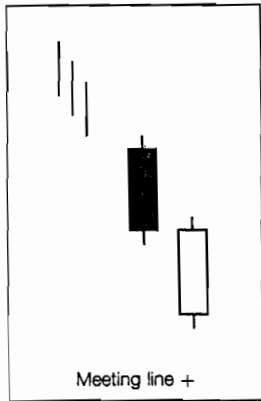
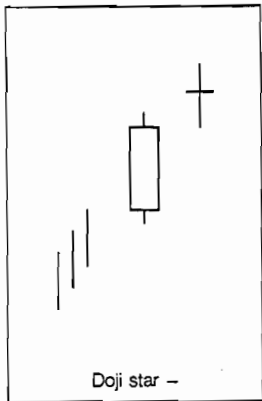
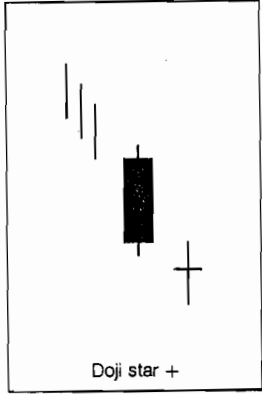
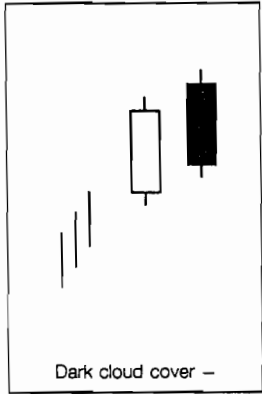
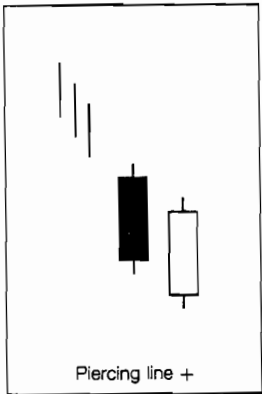
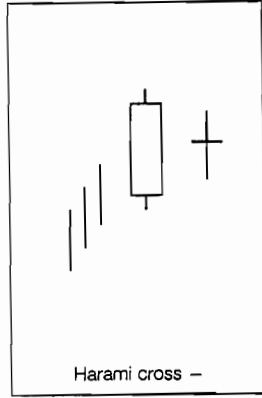
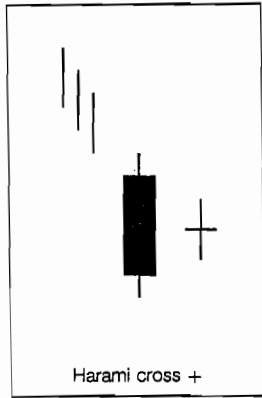
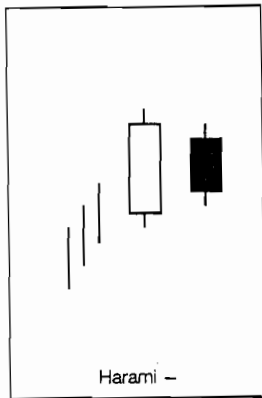
Formazioni d'inversione al ribasso

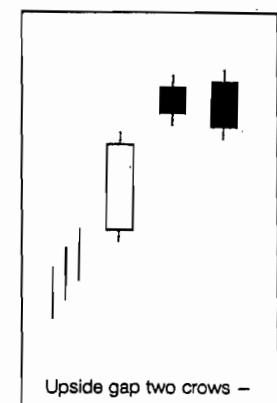
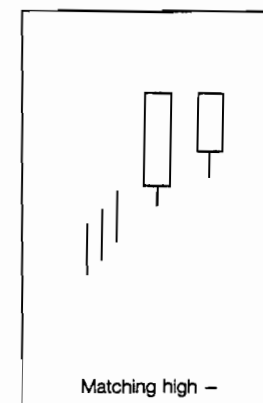
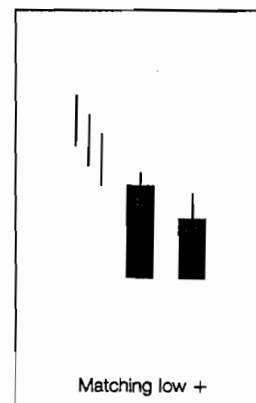
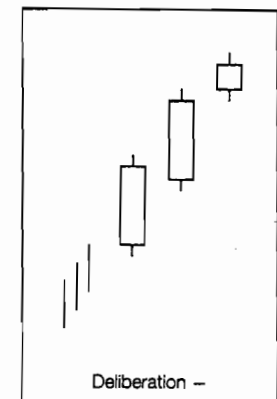
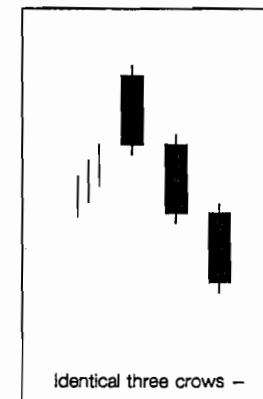
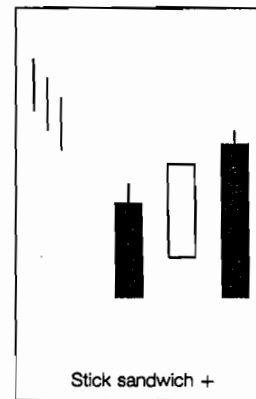
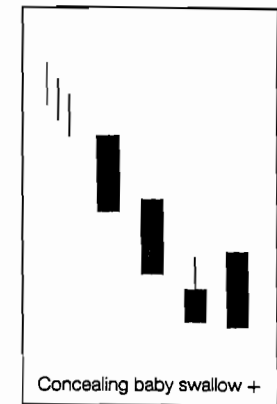
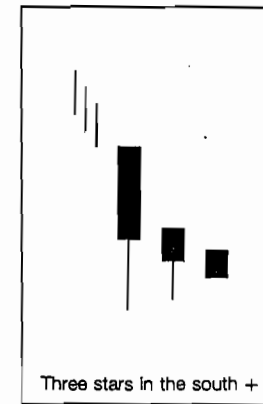
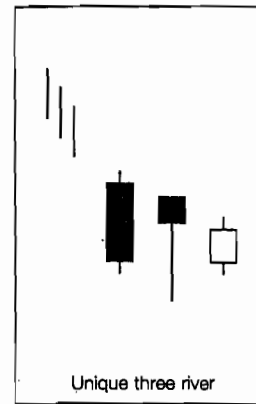
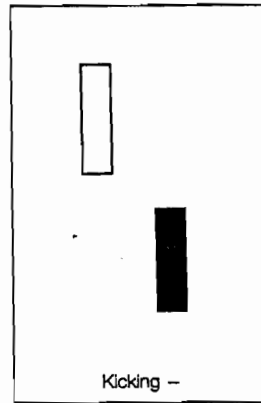
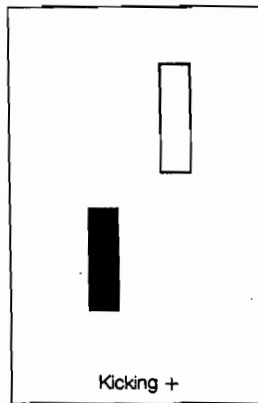
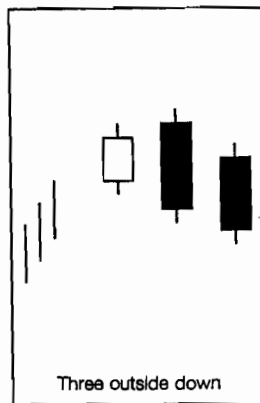
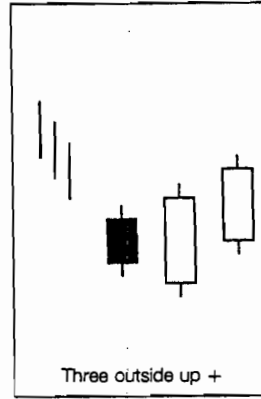
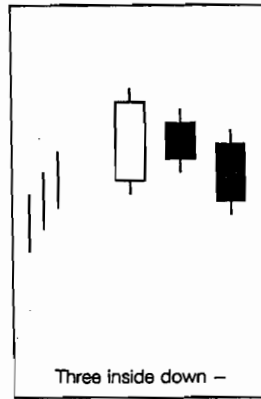
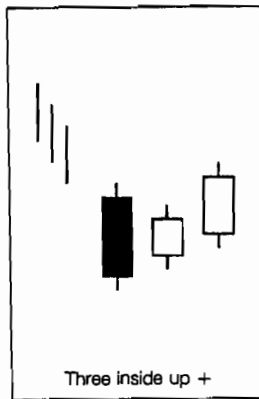
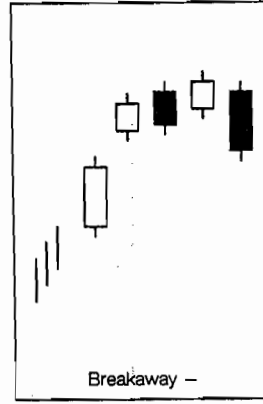
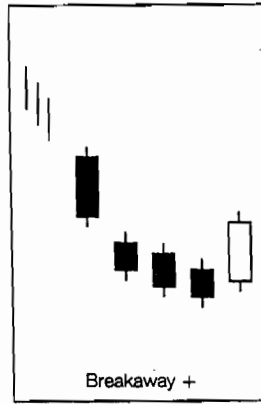
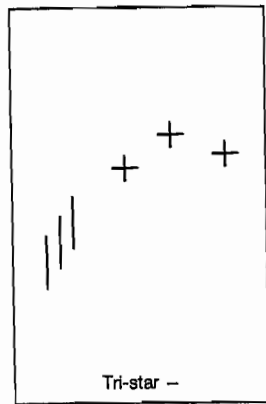
Long black body (1)
 Hanging man (1)
 Shooting star (1)
 Belt hold (1)
 Engulfing pattern (2)
 Harami (2)
 Harami cross (2)
 Dark cloud cover (2)
 Doji star (2)
 Meeting lines (2)
 Three black crows (3)
 Evening star (3)
 Evening doji star (3)
 Abandoned baby (3)
 Tri-star (3)
 Breakaway (5)
 Three inside down (3)
 Three outside down (3)
 Kicking (2)
 Latter top (5)
 Matching high (2)
 Upside gap two crows (3)
 Identical three crows (3)
 Deliberation (3)
 Advance block (3)
 Two crows (3)

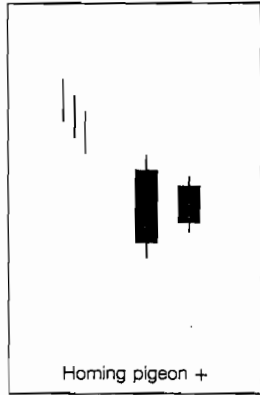
Formazioni di continuazione al ribasso

Separating lines (2)
 Falling three methods (5)
 Downside tasuki gap (3)
 Side by side white lines (3)
 Three line strike (4)
 Downside gap three methods (3)
 On neck line (2)
 In neck line (2)

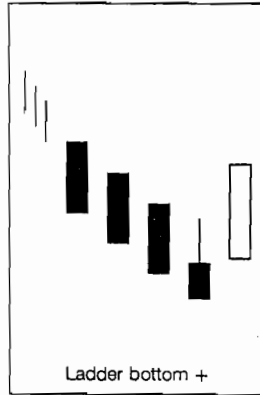




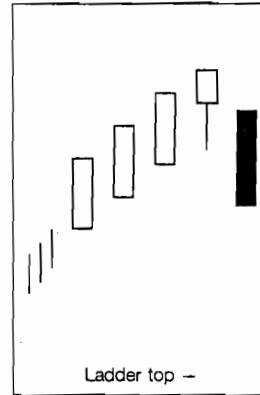




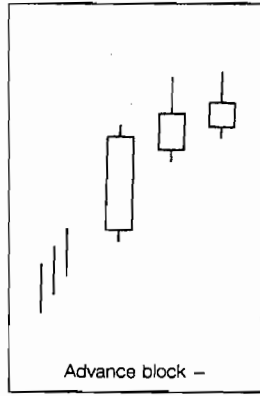
Homing pigeon +



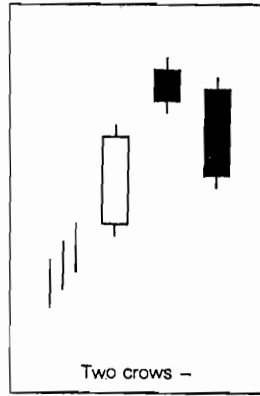
Ladder bottom +



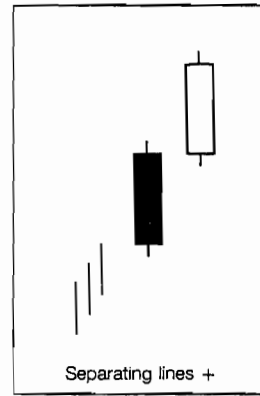
Ladder top -



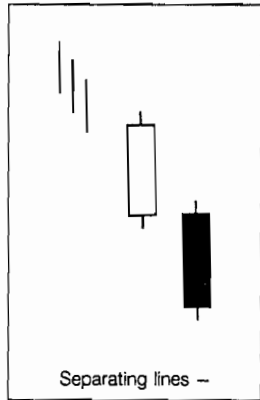
Advance block -



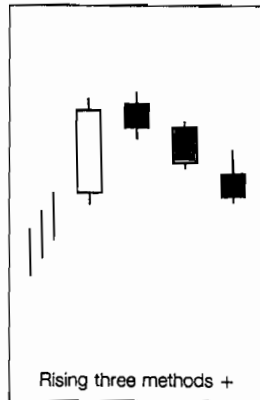
Two crows -



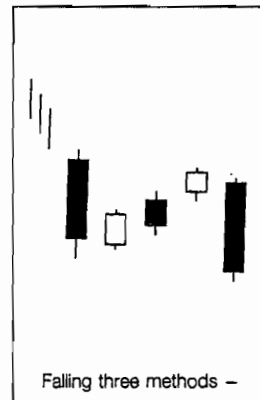
Separating lines +



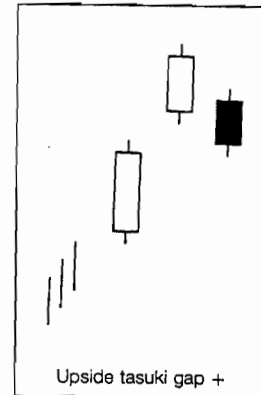
Separating lines -



Rising three methods +



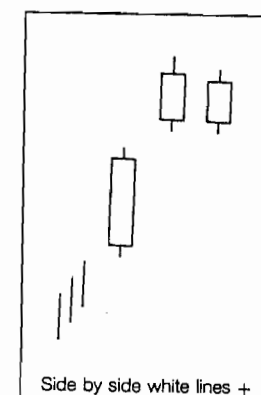
Falling three methods -



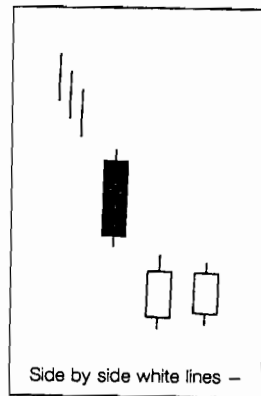
Upside tasuki gap +



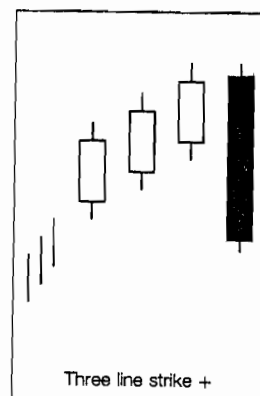
Downside tasuki gap -



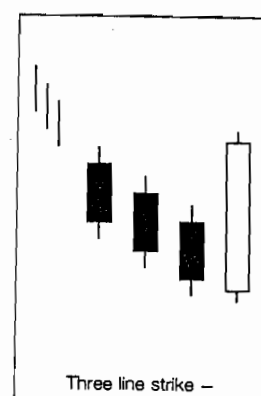
Side by side white lines +



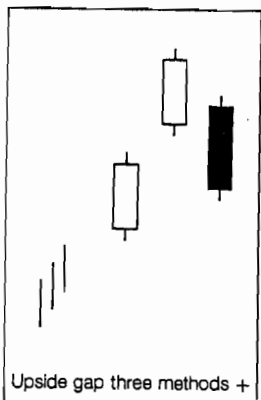
Side by side white lines -



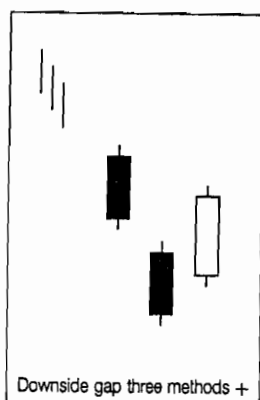
Three line strike +



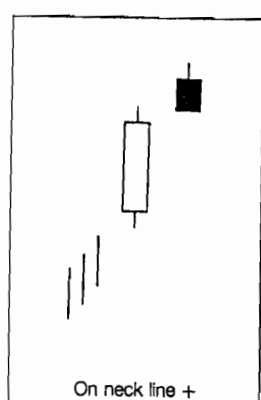
Three line strike -



Upside gap three methods +



Downside gap three methods +



On neck line +

